



TOP COOL 1000®

-30 @ 1000W (Tc)
-70°C to 200°C



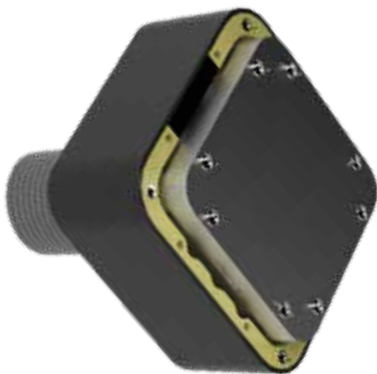
Extreme High Power Thermal Control Unit

MD Thermal control units were designed with high efficiency and flexibility in mind, allowing for customization to suit different package and interface variations. The system allows for temperature forcing across a wide range of device sizes and types, whether socketed or soldered to the board. With state of the art design and technology MD units stimulate the DUT to the desired temperature precisely and consistently via direct contact with a thermal head's tip.

The well proven thermal head methodology creates a stable temperature control environment right where you need. The pneumatically driven thermal head makes direct contact with the IC device providing great power handling and precise temperature control.

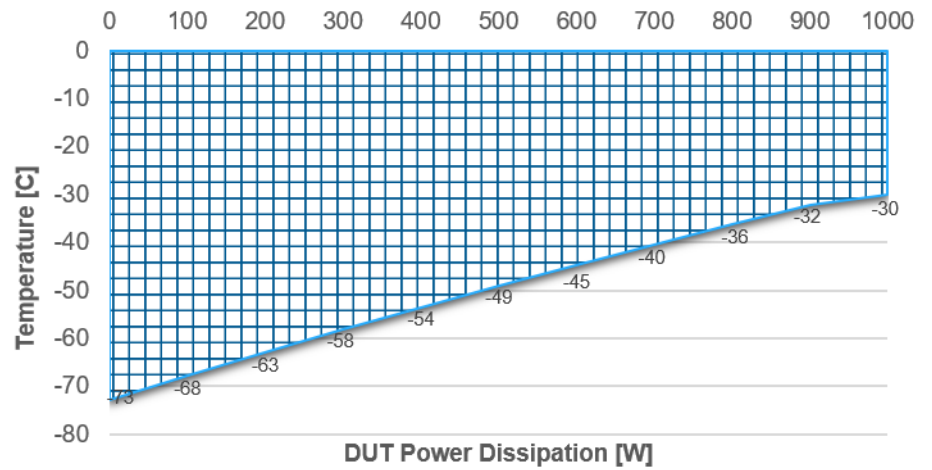
The G4 series features upgrades that include extended temperature range, low current consumption, low noise level, lower air temp emission with increased cooling power.

MaxTC Power Plus 75mm Head:





Case Temp. vs Total DUT dissipation



System Specifications:

Operating

Cooling Power	-30°C @ 1000W (Tc)
Temperature range	-70°C to + 200°C
Temperature accuracy	±0.2°C
Transition rates	Up to 75°C/min
Temperature sensor types	PT100 thermistor K-type thermocouple Thermal diode feedback
Actuation type	Pneumatic clip-on actuator
Actuation force	30-350 kgf

Mechanical Data

System size (WxHxL)	577mm x 370mm x 753mm
System weight	100 Kg
Controller to TH distance	~2 meter (6.5ft)

FEATURES:

- Temperature range -60°C to 175°C
- High Cooling power
- Temperature stability 0.5°C
- Self-contained liquid free operation
- Quiet and portable
- Adapt to most packages and sockets
- Condensation FREE
- Maintenance FREE
- Remotely controlled via an ethernet
- Fully programmable for automation
- Tj and Tc control
- Environmentally friendly operation

Facilities

Power	3PH, 208-230/460V AC 50/60Hz
CDA	<0.5cfm @ 90PSI -70°C dew point
Operating temperature	-10°C to 30°C
Plug	3P+N+E

Data Communication

Ethernet TCP/IP	RJ-45
USB	Type B
Touch screen display	7" LCD

AVAILABLE OPTIONS:

- Clip-on actuator
- Manual actuator
- Toggle clamp
- Boom stand
- Customized fixtures
- Enclosures

APPLICATIONS:

- ATE, SLT and bench
- High reliability testing
- OEM integrations
- LN2/thermal stream/chiller replacement