



MAX TC[®] Power Plus



-75°C to 200°C

-40°C @ 600W

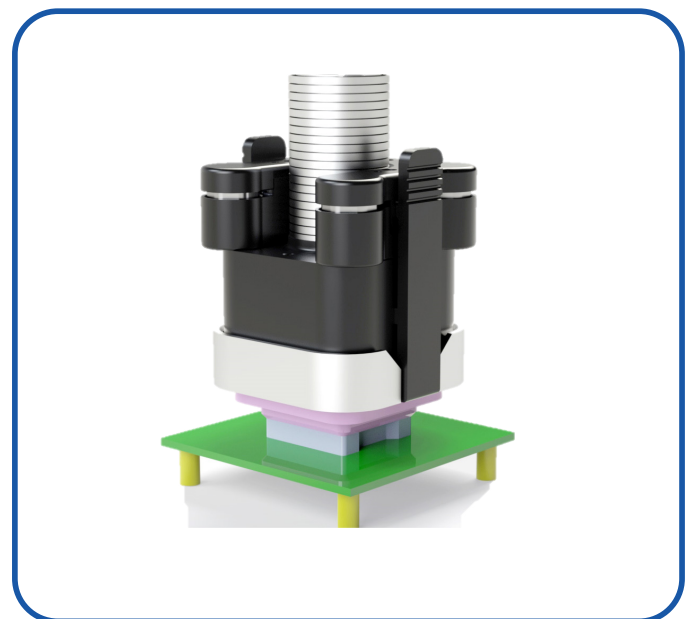
Rack Mount

High Power Thermal Control Unit

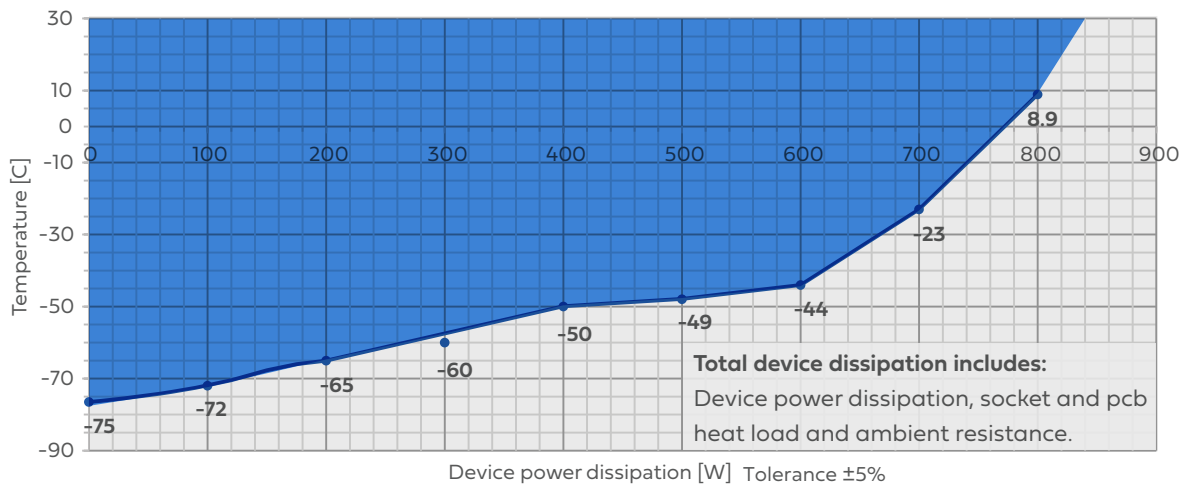
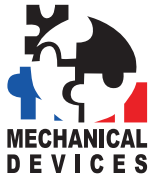
The MD Thermal Control Units are designed for high efficiency and flexibility, allowing customization for various package types and interfaces. These systems provide precise temperature control for a wide range of device sizes and configurations, whether socketed or soldered to the board. Using advanced technology, the MD units maintain accurate and consistent temperature control by directly contacting the Device Under Test (DUT) with the thermal head tip.

The proven thermal head method ensures stable temperature regulation at the point of contact. The pneumatically-driven thermal head directly contacts the IC device, delivering excellent power handling and precise temperature control.

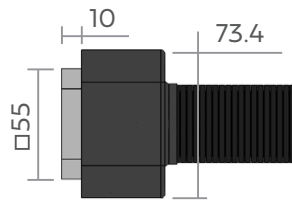
The Power Plus series offers key upgrades, including an extended temperature range, lower current consumption, reduced noise, lower air temperature emission, and improved cooling power.



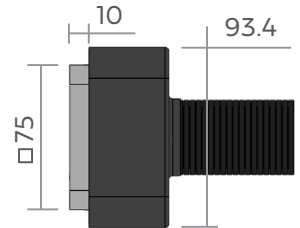
Case temp vs total device dissipation



Standard head



Enlarged head



System Specifications:

Operating

Temperature range	-75°C to + 200°C
Temperature accuracy	±0.2°C
Transition rates	Up to 75°C/min
Temperature sensor types	PT100 thermistor K-type thermocouple Thermal diode feedback
Actuation type	Pneumatic clip-on actuator
Actuation force	up to 80 Kgf / 350 Kgf

Facilities

Power	200V-240V AC, 60Hz, 20A 200V-240V AC, 50Hz, 20A 110V AC, 60Hz, 30A/20A
CDA	<0.5cfm @ 90PSI -70°C dew point
Operating temperature	5°C to 27°C
Plug	NEMA L6-30/20 (220V Ver) NEMA L5-30 (110V Ver)

Mechanical Data

System size (WxHxL)	436.5mm x 370mm x 700mm / 505 mm x 365mm x 610mm
System weight	65 Kg
Thermal head (mm)	73 x 43 x 73
Controller to TH distance	~2 meter (6.5ft) ~2.5m (8.2 ft)

Data Communication

Ethernet TCP/IP	RJ-45
USB	Type B
Touch screen display	7" LCD

Features:

- Temperature range -75°C to 200°C
- Cooling power -40°C @ 600W (Tc)
- Temperature stability 0.2°C
- Self-contained liquid free operation
- Quiet and portable
- Adapt to most packages and sockets
- Condensation FREE
- Maintenance FREE
- Remotely controlled via an ethernet
- Fully programmable for automation
- Tj and Tc control
- Environmentally friendly operation

Available Options:

- Clip-on actuator
- Manual actuator
- Toggle clamp
- Boom stand
- Customized fixtures
- Enclosures

Applications:

- ATE, SLT and bench
- High reliability testing
- OEM integrations
- LN2/thermal stream/
chiller replacement