

Remote TCP/IP communication with the FLEXTC pointing compiled EXE file:

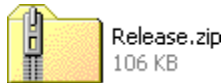
- 1) Download and install Microsoft .net framework 4.0.

Use the following link:

<http://www.microsoft.com/en-us/download/details.aspx?id=17851>

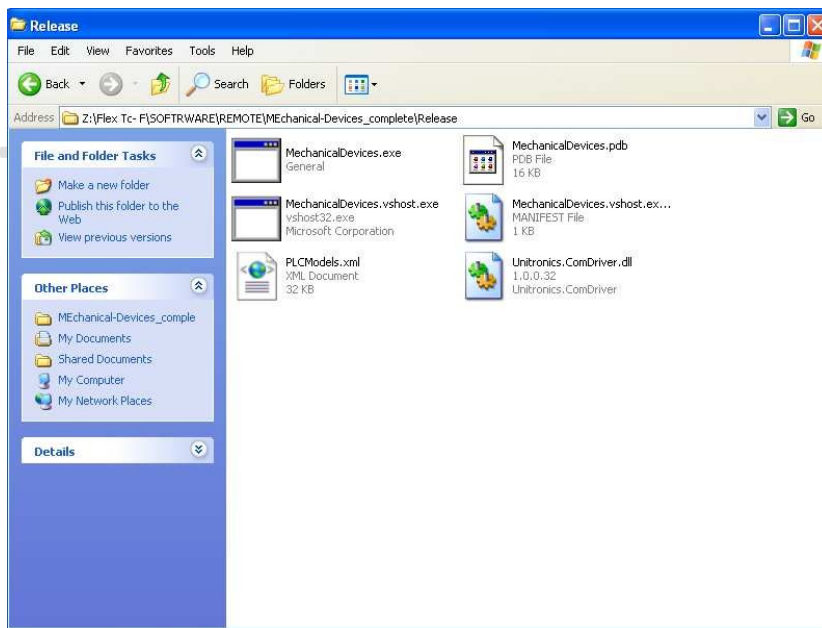
- 2) Attached to this email please find Release.zip file.

Unzip it to a local hard drive computer.



- 3) Make sure you have all the following unzipped files:

- a) MechanicalDevices.exe
- b) MechanicalDevices.pdb
- c) MechanicalDevices.vshost.exe
- d) Unitronics.ComDriver.dll
- e) MechanicalDevices.vshost.exe.manifest



- 4) Turn on the FLEXTC unit. Make sure you connect the Ethernet cable from your network server / or /personal computer to the FlexTC.
- 5) If you use direct Ethernet connection from the desktop to the FlexTC, you need to change the computer network connection.



MECHANICAL DEVICES

For WIN XP do the following changes:

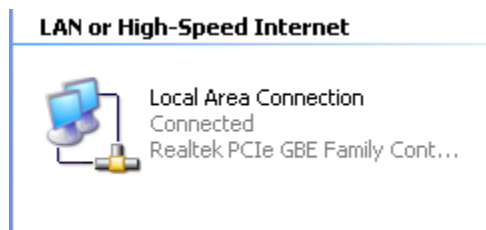
a) Go to "My computer" and press the "Control Panel" Icon.



b) Press the "Network Connections" icon.



c) Double Click the "Local Area Connection" Icon.



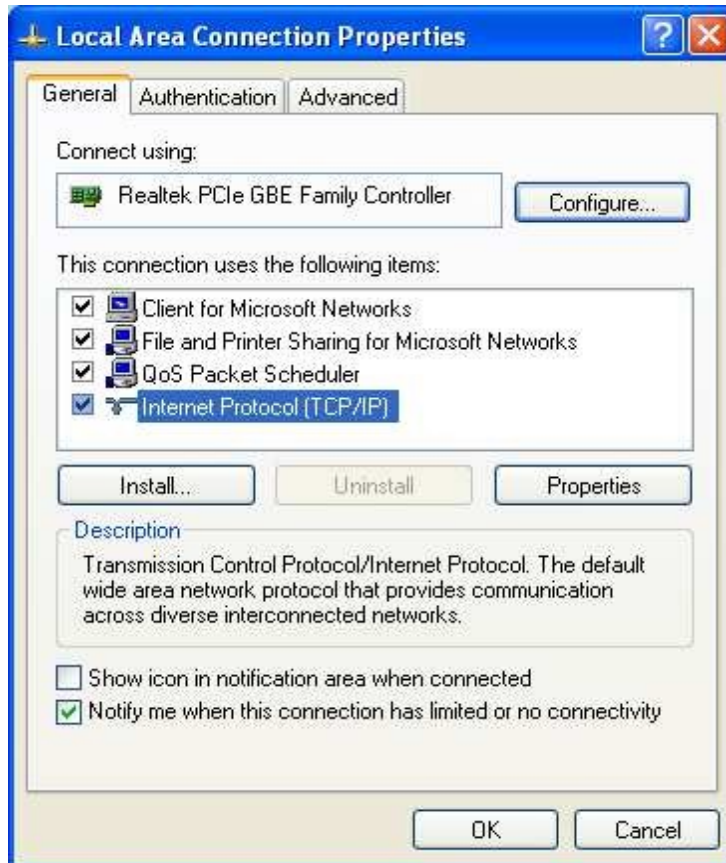
d) On "Local Area Connections" sub menu press the "Properties" icon.





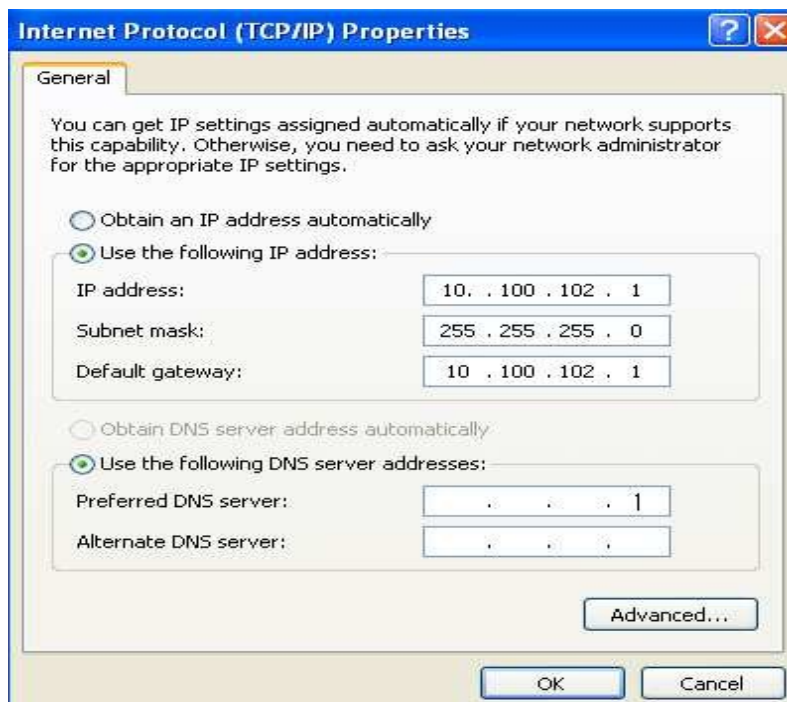
MECHANICAL DEVICES

- f) On the "Internet Protocol" press on Properties icon.



- g) Use Static address for this computer. Make sure the last IP character will defer from the static IP on the machine.

For Example Computer Static IP is : 10.100.102.1 when the FlexTC Static I.P is : 10.100.102.17.





MECHANICAL DEVICES

- 6) Set the machine "Static IP" using the FLETC "SET IP" located on the manual control window :

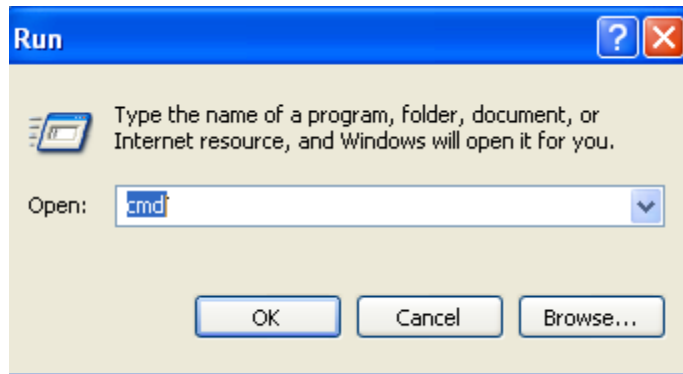


The FLETC has a changeable static IP configuration according to the Net server configuration.

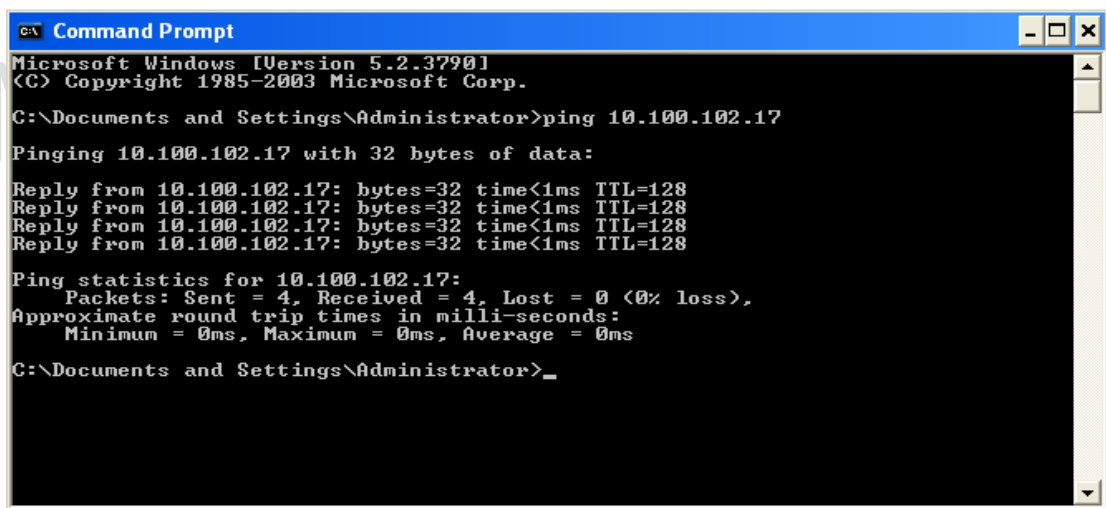
For this Example chose:

IP: 10.100.102.17 and GET: 255.255.255.0 and SUB: 10.100.102.17.

- 7) Go to the command line and RUN "cmd" command.



- 8) Use ping command to make sure you got TCP/IP connection.



- 9) Run the unzipped MechanicalDevices.exe file using the following instructions on command line or your program application.

Read command form MI (register cell) : c:\release\MechanicalDevices.exe MIXXXX

10.100.102.17 20256 Explanation:

c:\release\MechanicalDevices.exe : MechanicalDevices.exe location of unzipped release.zip file.

MIXXXX : is the register address.

For example MIO699 is the "SET Point" register address. Attached a complete register address file.

10.10.102.17 : is the static I.P address.

20256 : is the controller port number. Use this number.



MECHANICAL DEVICES

```
C:\>c:\release\mechanicaldevices.exe MI0699 10.100.102.17 20257
*****
          Mechanical Devices CLI Version 2.0
*****

Connection established to 10.100.102.17 port 20256'
MI-> Reading from address 699
Result =250
Operation Completed
```

Write command form MI (register cell) : c:\release\MechanicalDevices.exe MIXXXX

10.100.102.17 20256 XXXX Explanation:

c:\release\MechanicalDevices.exe : MechanicalDevices.exe location of unzipped release.zip file.

MIXXXX : is the register address.

For example MI699 is the "SET Point" register address. Attached a complete register address file.

10.10.102.17 : is the static I.P address.

20256 : is the controller port number. Use this number. XXXX : is the register value.

```
C:\>c:\release\mechanicaldevices.exe MI0699 10.100.102.17 20257 256
*****
          Mechanical Devices CLI Version 2.0
*****

Connection established to 10.100.102.17 port 20256'
MI-> Writing 256 to address 699
Operation Completed
```

Read command form MB (Boolean cell) : c:\release\MechanicalDevices.exe MBXXXX

10.100.102.17 20256 Explanation:

c:\release\MechanicalDevices.exe : MechanicalDevices.exe location of unzipped release.zip file.

MBXXXX : is the Boolean address.

For example MBO20 is the "RUN" bit address. Attached a complete BIT address file.

10.10.102.17 : is the static I.P address.

20256 : is the controller port number.

```
C:\>c:\release\mechanicaldevices.exe MB0020 10.100.102.17 20257
*****
          Mechanical Devices CLI Version 2.0
*****

Connection established to 10.100.102.17 port 20256'
MB-> Reading from address 20
Result =0
Operation Completed

C:\>
```



MECHANICAL DEVICES

Write command form MB (Boolean cell) : c:\release\MechanicalDevices.exe MBXXXX

10.100.102.17 20256 X Explanation:

c:\release\MechanicalDevices.exe : MechanicalDevices.exe location of unzipped release.zip file.

MBXXXX : is the Boolean address.

For example MBO20 is "RUN" bit address. 10.10.102.17 : is the static I.P address.

20256 : is the controller port number. X : is 1

or 0

```
C:\>c:\release\mechanicaldevices.exe MB0020 10.100.102.17 20257 0
*****
      Mechanical Devices CLI Version 2.0
*****

Connection established to 10.100.102.17 port 20256'
MB-> Writing 0 to address 20
Operation Completed

C:\>
```

10) Please refer to the Register and bit Map for complete parameters address.

INTELLECTUAL PROPRIETY