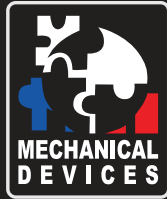


Max TC Power Plus (G4)[®]

Extreme - Thermal Forcing System. Exceptionally Powerful, Low Temp & Reliable.



-75°C - 200°C
-50°C @ 400W

Selected heads: Reduced (45 mm), Standard (55mm), Enlarged (75 mm)

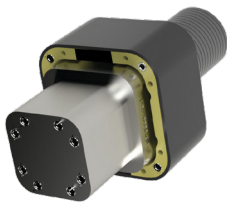
MD Thermal control units were designed with high efficiency and flexibility in mind, allowing for customization to suit different package and interface variations. The system allows for temperature forcing across a wide range of device sizes and types, whether socketed or soldered to the board. With state of the art design and technology MD units stimulate the DUT to the desired temperature precisely and consistently via direct contact with a thermal head's tip.

The well proven thermal head methodology creates a stable temperature control environment right where you need. The pneumatically driven thermal head makes direct contact with the IC device providing great power handling and precise temperature control.

The G4 series features upgrades that include extended temperature range, low current consumption, low noise level, lower air temp emission with increased cooling power.

3 models are available at your choice:

Reduced head

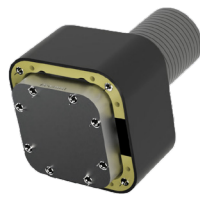


NEW

MDMTC-2PP-ADD8

45 mm footprint & elongated nose allows for an improved keep out area to test <45mm socketed and soldered devices mm where the connectors and cables are very close to the DUT.

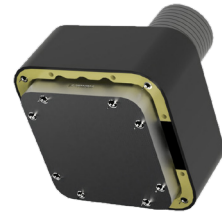
Standard head



MDMTC-2PP-ADD2

55 mm footprint is more suitable for testing socketed and soldered standard devices up to 55 mm.

Enlarged head



NEW

MDMTC-2PP-ADD6

75 mm footprint is more suitable for testing large socketed and soldered devices or modules up to 100 mm.

Features:

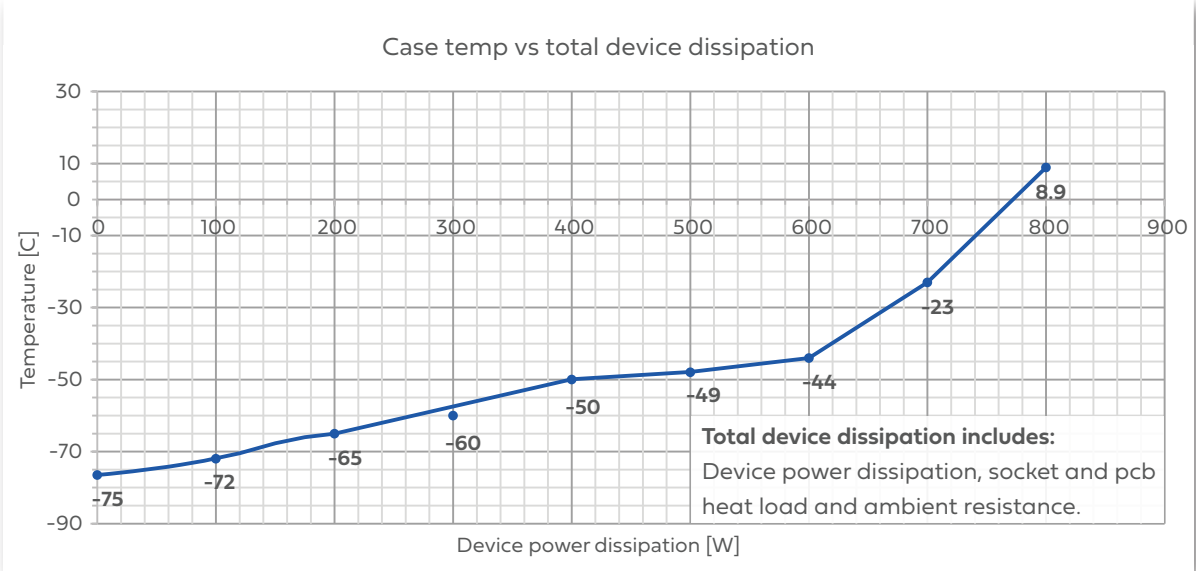
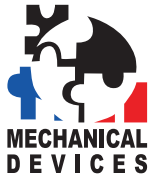
- Temperature range -75°C to 200°C
- Cooling power -50°C @ 400W (Tc)
- Temperature stability 0.2°C
- Self-contained liquid free operation
- Quiet and portable
- Adapt to most packages and sockets
- Condensation FREE
- Maintenance FREE
- Remotely controlled via an ethernet
- Fully programmable for automation
- Tj and Tc control
- Environmentally friendly operation

Available Options:

- Clip-on actuator
- Manual actuator
- Toggle clamp
- Boom stand
- Customized fixtures
- Enclosures

Applications:

- ATE, SLT and bench
- High reliability testing
- OEM integrations
- LN2/thermal stream/chiller replacement



System Specifications:

Operating

Temperature range	-75°C to + 200°C
Temperature accuracy	±0.2°C
Transition rates	Up to 75°C/min
Temperature sensor types	PT100 thermistor K-type thermocouple Thermal diode feedback
Actuation type	Pneumatic clip-on actuator
Actuation force	3-80 kgf or 30-220 kgf

Facilities

Power	200V-240V AC 50/60Hz, 16A max
CDA	<0.5cfm @ 90PSI -70°C dew point
Operating temperature	-10°C to 30°C
Plug	Nema L6-20/30

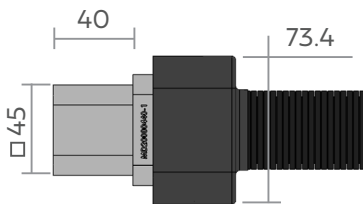
Mechanical Data

System size (WxHxL)	505mm x 365mm x 610mm
System weight	65 Kg
Controller to TH distance	~2 meter (6.5ft)

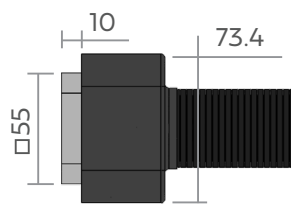
Data Communication

Ethernet TCP/IP	RJ-45
USB	Type B
Touch screen display	7" LCD

Reduced head



Standard head



Enlarged head

