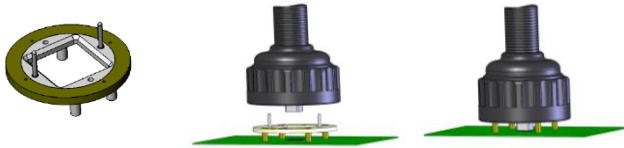


## Soldered Interface application options:

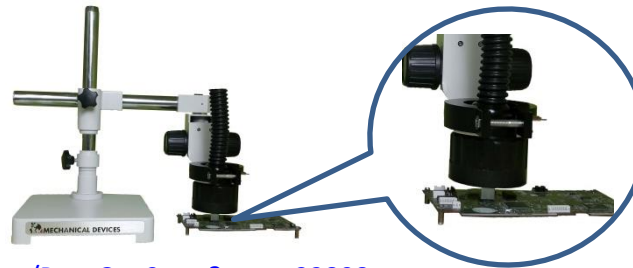
- The mounting holes locations are determined by the corresponding holes in the customer-supplied socket board.
- Options: Any Height, Mechanical Stoppers, High-pin-count handle, alignment pins
- Options: Smaller size plungers can be used with +20% larger devices
- Suitable for relatively long run test

1. Universal Adapter Plates are attached to test boards , the same Universal Adapter Plate can be used in many different projects for testing diversity of devices



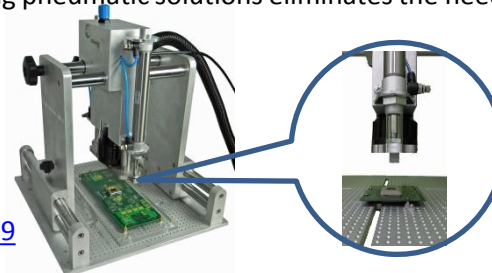
<http://www.mechanical-devices.com/homesites/PageGen2.asp?page=23895>

2. Using the Microscopic Boom Stand as the guide for the Thermal head, lowering the Plunger for full contact upon the DUT with Thermal pad.



<http://www.mechanical-devices.com/homesites/PageGen2.asp?page=23898>

3. Pneumatic interfaces enable the quick replacement of devices in the sockets, these solutions are suitable for customers who plan on testing many devices on a daily basis (over 100 units per day). Implementing pneumatic solutions eliminates the need for adapter plates but will require compressed air facilities for its operation.



<http://www.mechanical-devices.com/homesites/PageGen2.asp?page=23899>