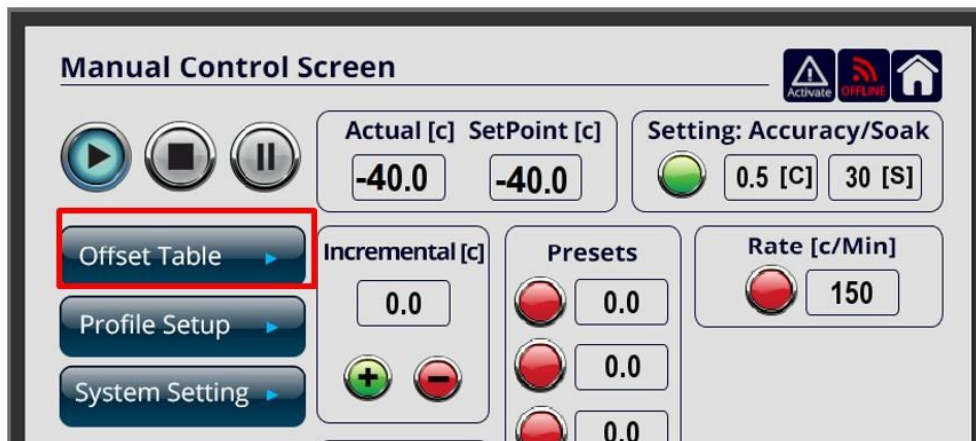


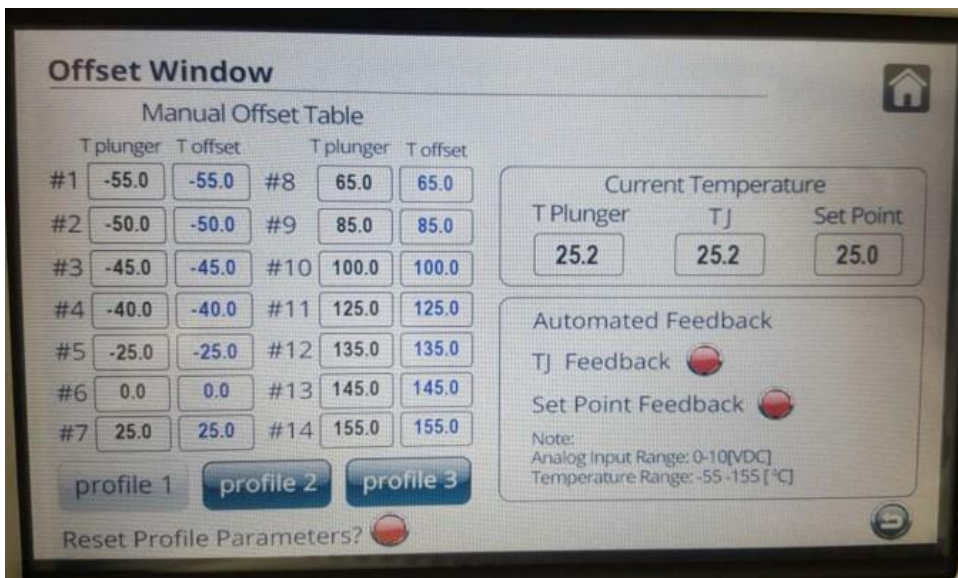
User Manual for Offset Tool

This Offset Tool is used for automatically generating offset values by using reference values at defined set points as measured by FlexTC / MaxTC and by any other temperature testing equipment. Generated offset values are automatically inputted into Manual Offset Table in FlexTC / MaxTC.

1. Start in **Manual Control Screen**. Select **Offset Table**.



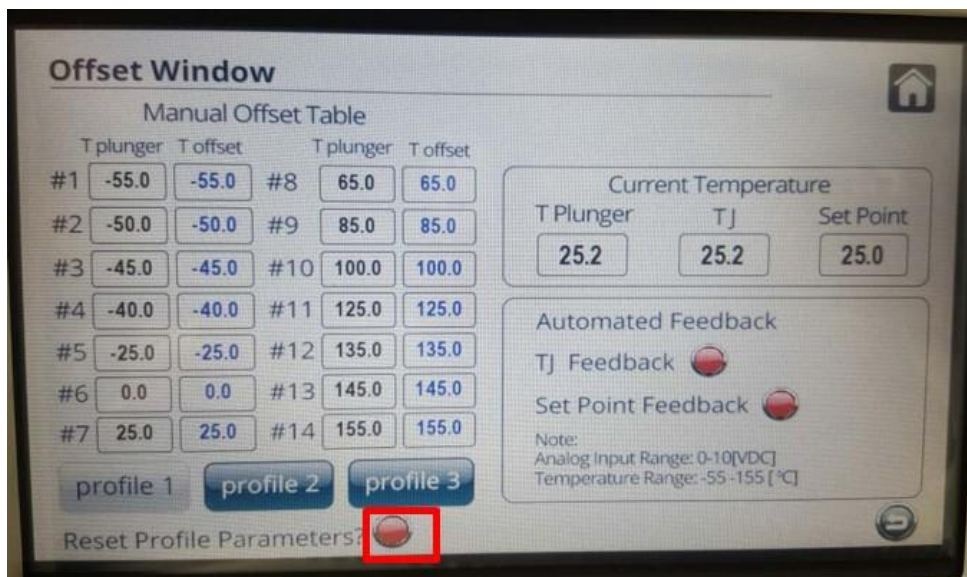
2. **Offset Window** screen will open up.



Offset Window screen has three panels:

- i. The Manual Offset Table.
- ii. The Current Temperature Panel
- iii. Automated Feedback Panel

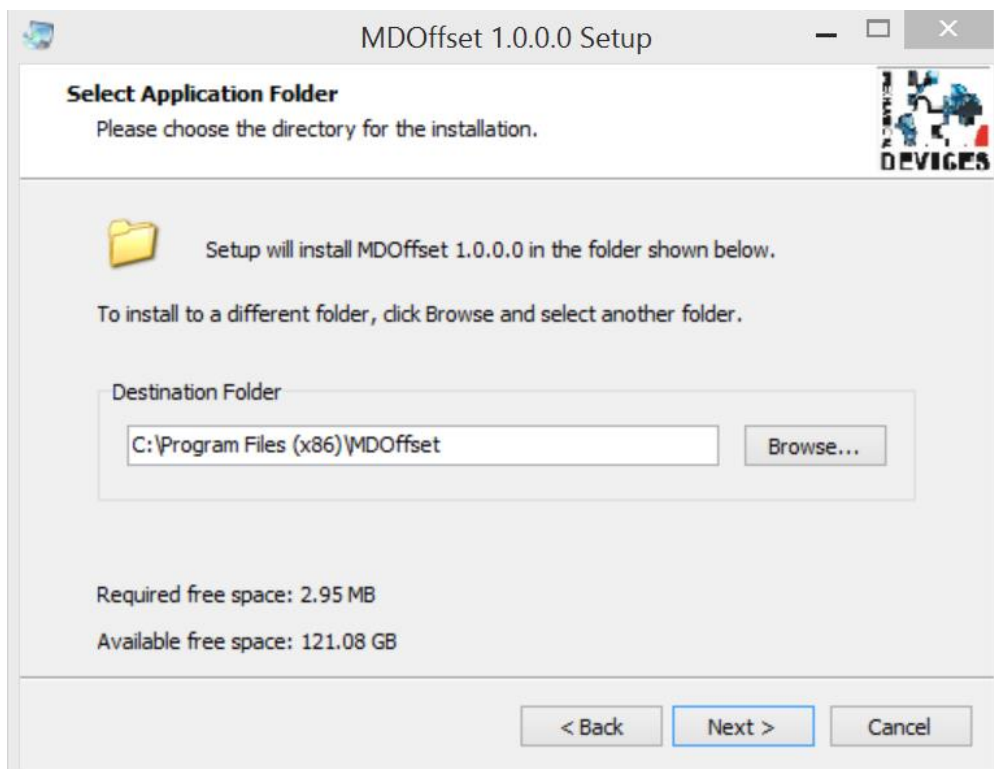
3. Select red indicator button next to **Reset Profile Parameters?**

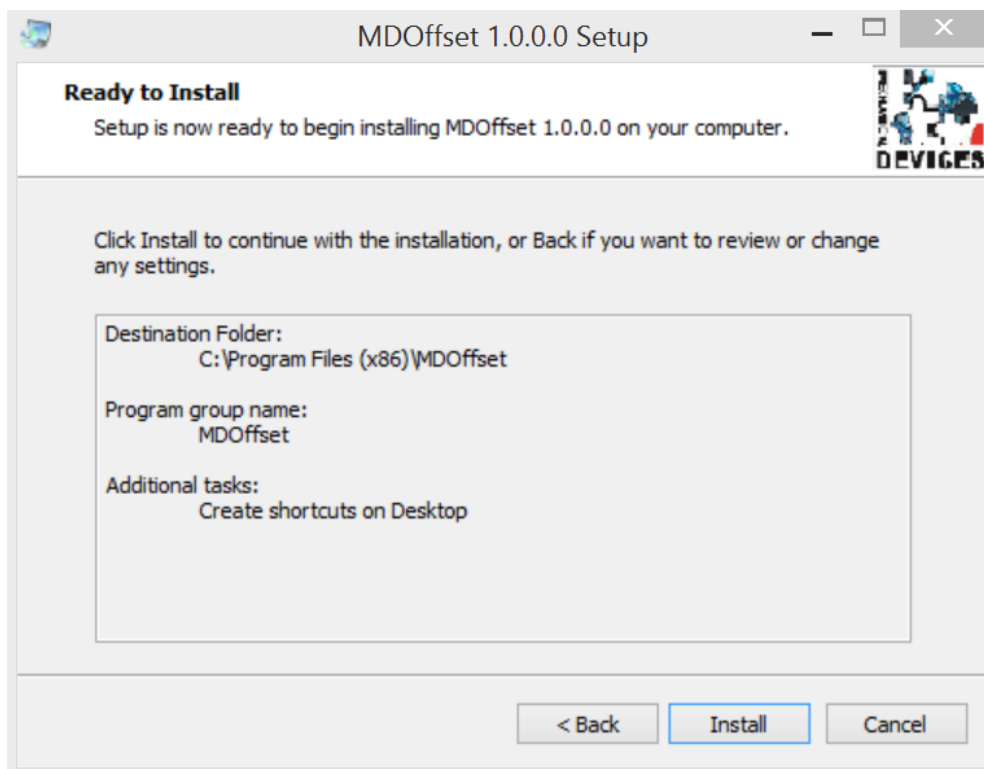
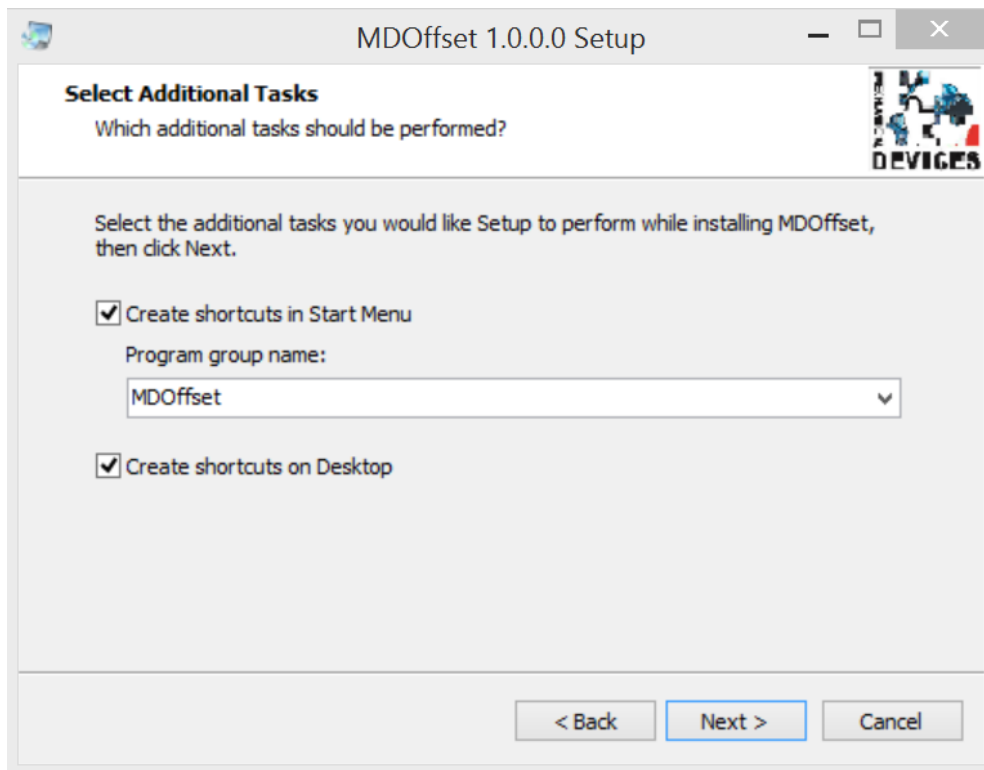


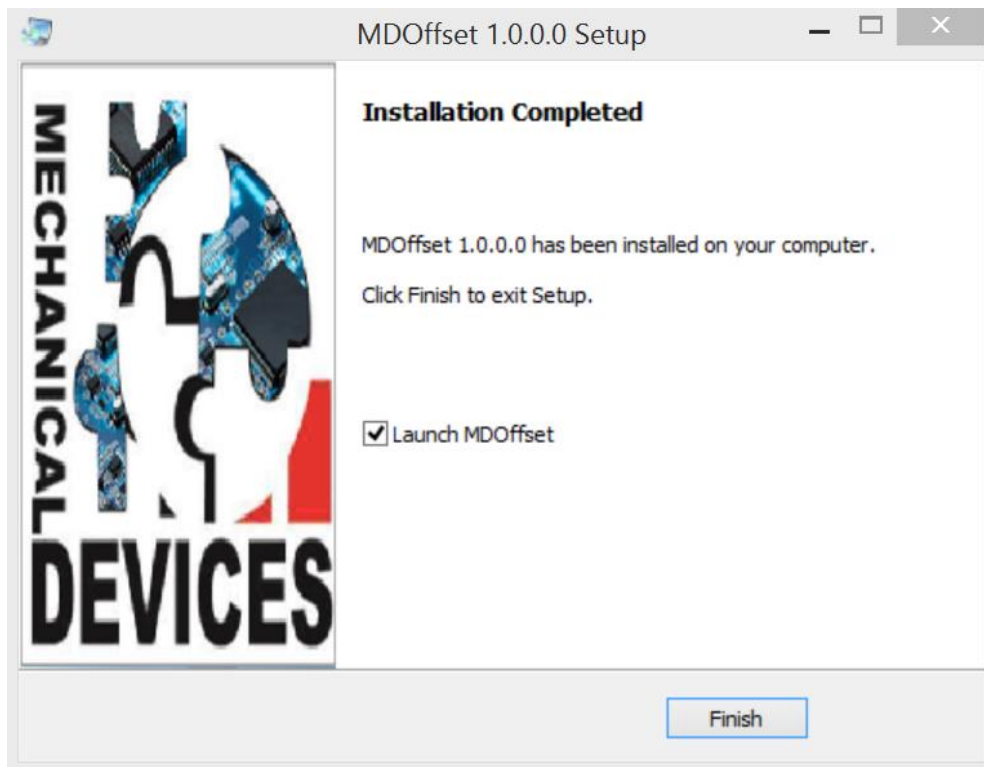
4. Download and run the setup file **Setup_MDOffset** available for download from MD website: <http://www.mechanical-devices.com/homesites/PageGen2.asp?page=36490>

 Setup_MDOffset	03/04/2017 21:37	Application	4,045 KB
--	------------------	-------------	----------

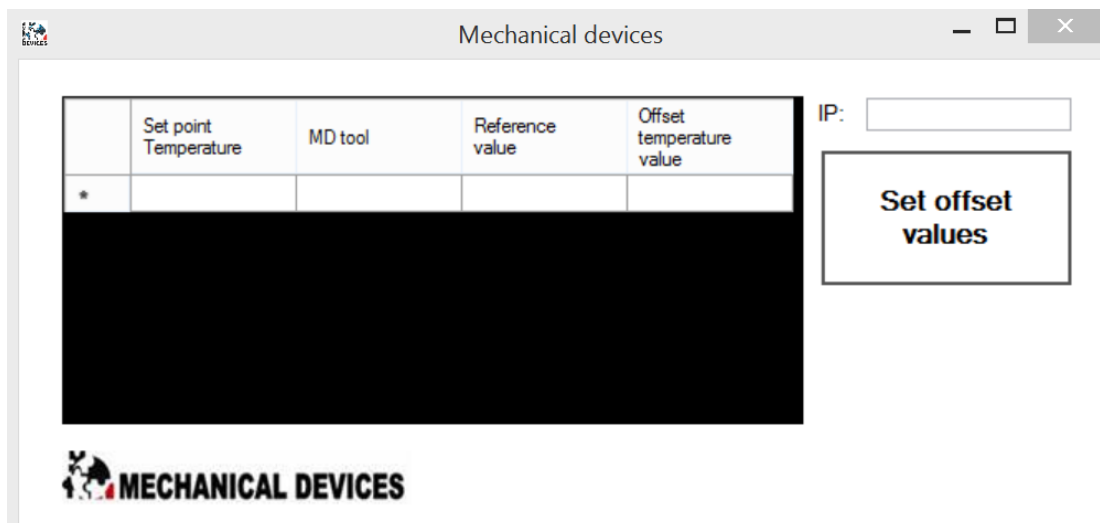
5. Follow the installation instructions of the setup file.







6. Offset Tool main window will open up.



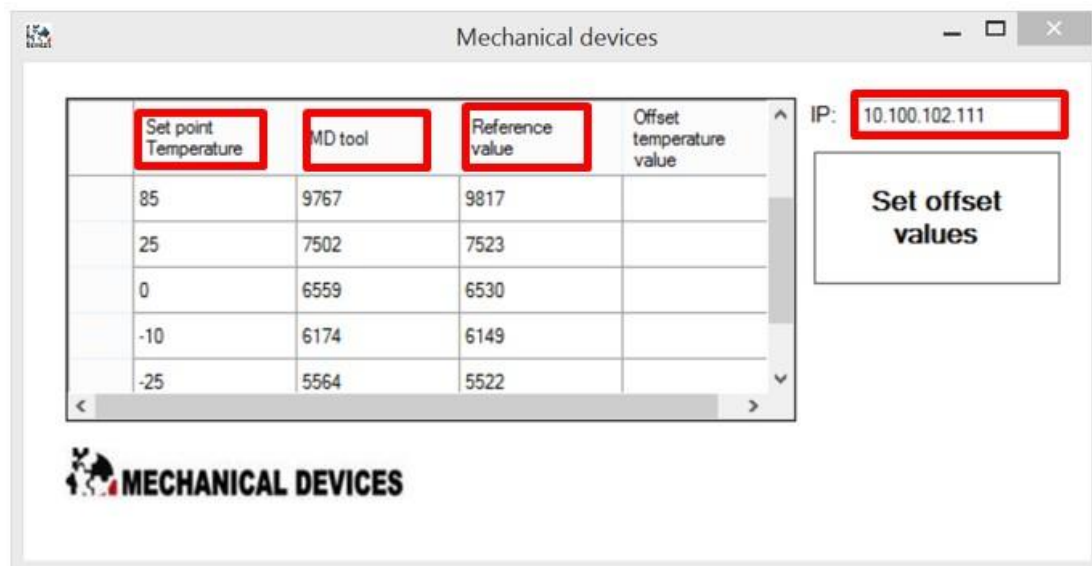
7. In IP field enter the IP address of your FlexTC or MaxTC.

Fill out the table with values of your trial values as measured with the FlexTC / MaxTC and any other temperature testing equipment.

Set point Temperature – set points at which measurements were taken. Enter values in [°C]

MD tool – measurements taken with FlexTC / MaxTC. Enter values in [mV]

Reference value - measurements taken with any other temperature testing equipment. Enter values in [mV]

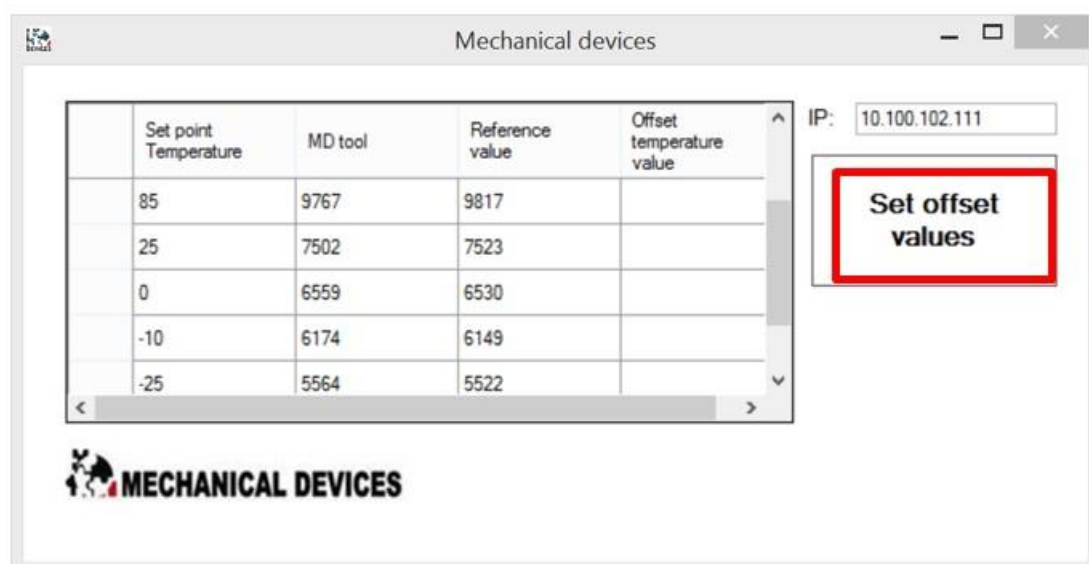


Set point Temperature	MD tool	Reference value	Offset temperature value
85	9767	9817	
25	7502	7523	
0	6559	6530	
-10	6174	6149	
-25	5564	5522	

IP: 10.100.102.111

Set offset values

8. Select button **Set offset values**.

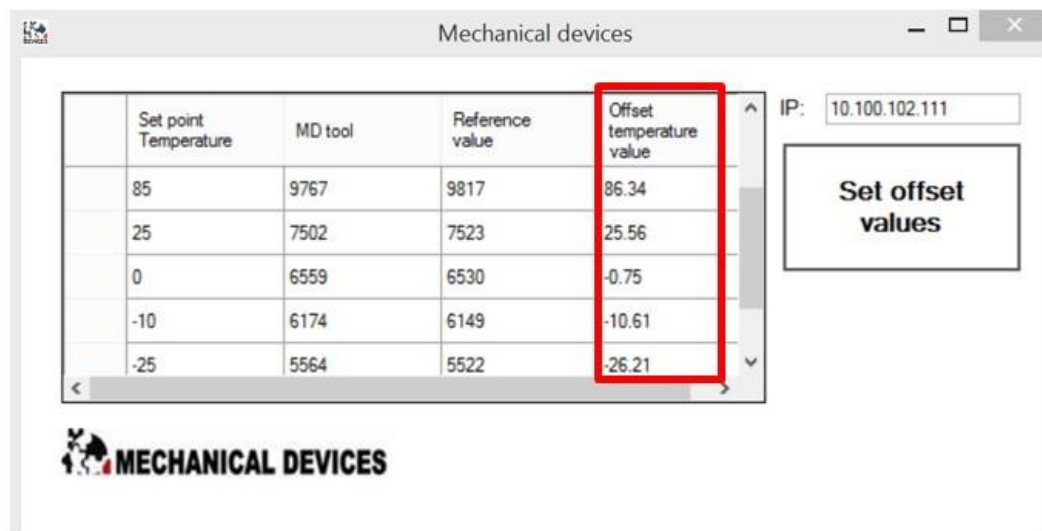


Set point Temperature	MD tool	Reference value	Offset temperature value
85	9767	9817	
25	7502	7523	
0	6559	6530	
-10	6174	6149	
-25	5564	5522	

IP: 10.100.102.111

Set offset values

9. Offset temperature value has been automatically generated based on Set point Temperature, MD tool, and Reference value.



10. At the same time in offset values have been generated and entered in Manual Offset Table in FlexTC or MaxTC. This T Offset value is a product of Set point Temperature, Offset temperature value, and T plunger.

