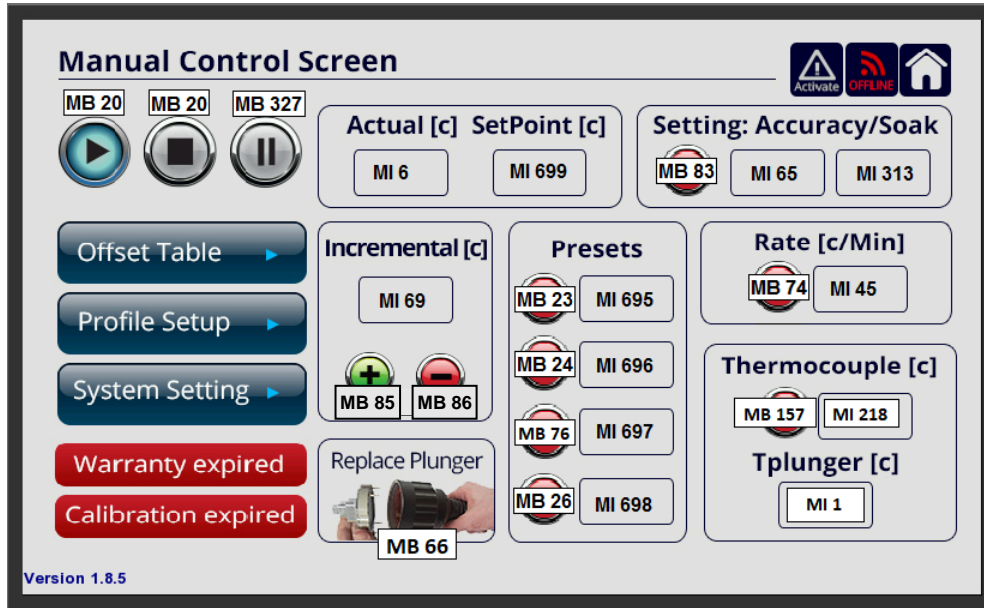


Register Maps

Manual Control Screen Register Map



BIT	BIT	Description
1	MB 20	Standby / play
2	MI 6	Actual temp [C]
3	MI 699	Set point [C]
4	MB 83	Converge bit - Soak time reached within accuracy [C/s] [read only bit]
5	MI 65	Temperature accuracy [C]
6	MI 313	Soak time accuracy [s]
7	MB 74	Activate rate [C/min]
8	MI 45	Rate [C/min] value
9	MB 23	Activate Preset 1
10	MI 695	Preset 1 temp value
11	MB 24	Activate Preset 2
12	MI 696	Preset 2 temp value
13	MB 76	Activate Preset 3
14	MI 697	Preset 3 temp value
15	MB 26	Activate Preset 4
16	MI 698	Preset 4 temp value
17	MI 69	Incremental [C] - Step
18	MB 85 / 86	Incremental + / -
19	MB 327	Pause system
20	MI 218	Thermocouple Temperature [C]
21	MI 1	T Plunger [C]
22	MB 157	Thermocouple Indicator
23	MB 66	Initiate Replace Plunger sequence, change from 0 to 1
	MB 326	Auto trigger for plunger disassembly, changes automatically from 0 to 1
	MB 999	System reset after new plunger install, change from 0 to 1
	MB 321	End of Replace Plunger sequence, change from 0 to 1

Offset Window Register Map

Offset Window

Manual Offset Table

	T plunger	T offset		T plunger	T offset
#1	MI139	MI165	#8	MI146	MI156
#2	MI141	MI162	#9	MI147	MI155
#3	MI140	MI161	#10	MI148	MI154
#4	MI142	MI160	#11	MI149	MI153
#5	MI143	MI159	#12	MI150	MI132
#6	MI144	MI158	#13	MI151	MI133
#7	MI145	MI157	#14	MI152	MI163

profile 1
MB162

profile 2

profile 3

Reset Profile Parameters?

Current Temperature

T Plunger	T J	Set Point
MI0001	MI0011	MI0699

Automated Feedback

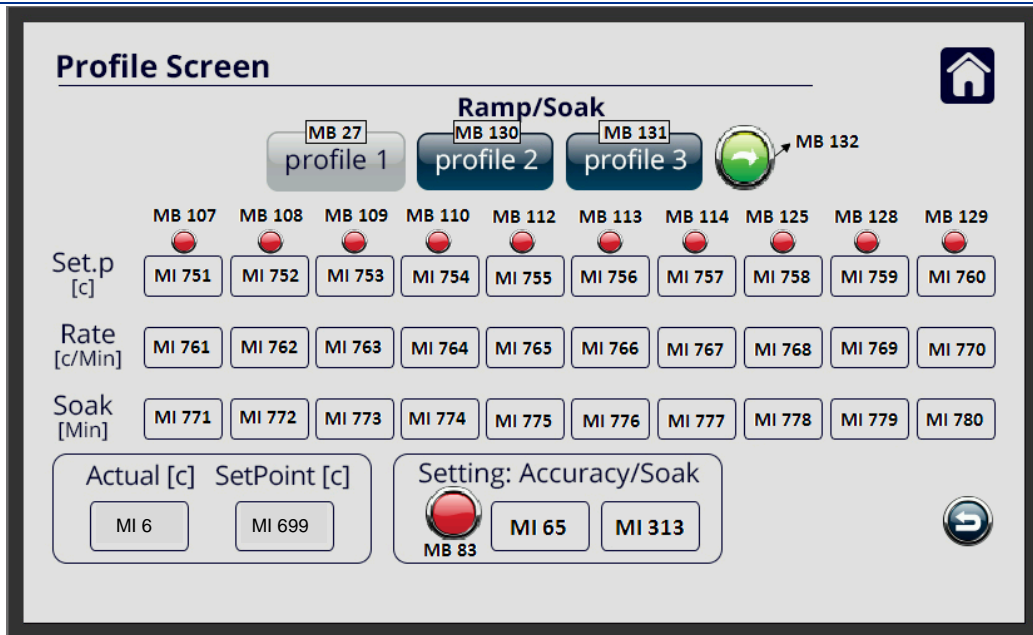
TJ Feedback MB171

Set Point Feedback MB172

Note:
 Analog Input Range: 0-10[VDC]
 Temperature Range: -55 -155 [°C]

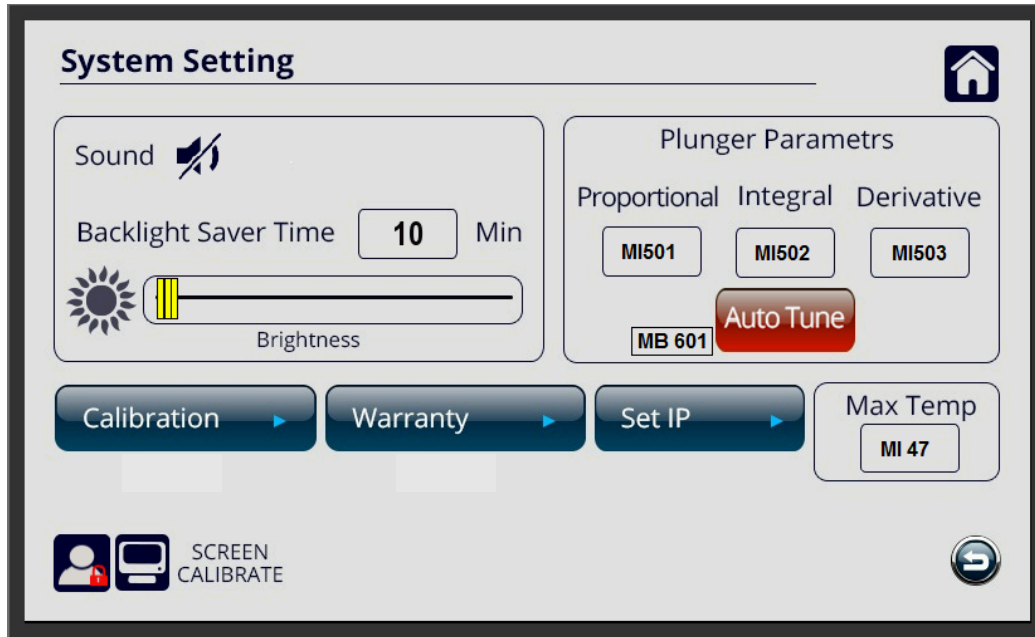
BIT	Description	
1	MB 162	Profile 1– Activate
2	MB 163	Profile 2 – Activate
3	MB 164	Profile 3 – Activate
4	MB 161	Reset Profile Parameters button
5	MB 294	Indication bit for warm up mode ("1" warm up on, "0" warm up finished)
6	MI 139/141/140/142/143/144/145	T Plunger
7	MI 165/162/161/160/159/158/157	T Offset
8	MI 146/147/148/149/150/151/152	T Plunger
9	MI 156/155/154/153/132/133/163	T Offset
10	MI 1	Current Temperature - T Plunger
11	MI 11	Current Temperature - T J
12	MI 699	Current Temperature – Set Point
13	MB 171	T J Feedback
14	MB 172	Set Point Feedback

Profile Screen Register Map



BIT		Description
1	MB 27	Profile 1 - Activate
2	MB 130	Profile 2 - Activate
3	MB 131	Profile 3 - Activate
4	MB 132	One arrow: One cycle Two arrows: Repetitive profile
5	MB 107/108/109/110/112/113/114/125/128/129	Profile step indication
6	MI 751/752/753/754/755/756/757/758/759/760	Set Point [C]
7	MI 761/762/763/764/765/766/767/768/769/770	Rate [C/min]
8	MI 771/772/773/774/775/776/777/778/779/780	Soak [min]
9	MI 6	Actual [C]
10	MI 699	Set Point [C]
11	MB 83	Soak Time Reached
12	MI 65	Settling: Accuracy/Soak ---- +/- Temperature [C]
13	MI 313	Settling: Accuracy/Soak ---- [s]

System Setting Register Map



BIT	Description
1 MB 601	Activate Auto Tune
2 MI 501	Plunger Parameters [PID]: Proportional value
3 MI 502	Plunger Parameters [PID]: Integral Gain value
4 MI 503	Plunger Parameters [PID]: Derivative Gain value
5 MI 47	Set Max Temp [C]